



# Dishwashing **E-VO Generation**




**Innovative ideas**  
Invest  
in the future

**eVO**  
GENERATION







An innovative and revolutionary idea revolves around the new generation of Fagor dishwashers: to combine in one single family all the requirements that the competition only offers in higher ranges.

Because this is the Fagor philosophy, its lifeblood and its way of understanding progress and the evolution of its products: Designing washing machines from two different points of view. On the one hand, from the product, more efficient, effective and environmentally-friendly. On the other hand, its usability, more simple, easier to maintain and clean.

A new generation with three different ranges that adapt to and cover all the requirements of a dishwashing area and which are committed to design, efficiency, robustness and reliability.

A new path for investing in the future and offering a new way of understanding dishwashing to the global market. Because Fagor is continuously evolving, changing and reinventing itself. **Always.**

## One body, three ranges

New **E-VO** Generation is a dream come true, something more than one step further: it is a different and innovative generation... Revolutionary.

Because **E-VO** is built on a unique basic idea: create a single body structure that offers common benefits for its three different ranges: **E-VO ADVANCE**, **E-VO CONCEPT+** and **E-VO CONCEPT**.

Three ranges which cover not only the specific needs of each client (restaurants, bars, cafes, pubs, schools, hotels, etc.), but create a smarter product and, at the same time, more simple; revolutionizing commercial dishwashing world.

01.

### **eVO** **ADVANCE**

*A new way of understanding exclusivity.*

Machines designed for those who want the best of the best, but with simple operation, easy to maintain and highly efficient.

- HOOD TYPE
- UNDERCOUNTER

02.

### **eVO** **CONCEPT+**

*Make it simple.  
Make it possible.*

E-VO CONCEPT+ range the perfect solution for those locations with low pressure water network and though efficacy requirements. E-VO CONCEPT+ has arrived, simply possible.

- HOOD TYPE
- UNDERCOUNTER

03.

### **eVO** **CONCEPT**

*High technology  
affordable for everyone.*

For those who believe that technology and simplicity can go hand in hand, E-VO CONCEPT has landed.

- UNDERCOUNTER
- GLASSWASHER

# eVO CONCEPT +

Make it simple.  
Make it possible.

It seems impossible, but it is real. Finally there is a machine capable of gathering all the benefits and features from high-end ranges. Built in durable stainless steel with electromechanical components and simple digital controls for a user-friendly operation.

**E-VO CONCEPT+** offers a highly efficient and effective washing and rinsing system (EFFI-WASH & EFFI-RINSE) becoming the perfect solution for those locations with low water pressure and high production requirements.

**E-VO CONCEPT+** has arrived, simply possible.

## Energy saving



COP-174W: **-70%**  
COP-504W: **-44%**



COP-174 W: **-27%**  
COP-504W: **-16%**



## SPECIFICATIONS

	HOOD TYPE	UNDERCOUNTER
MODEL	<b>COP-174W</b>	<b>COP-504W</b>
DIMENSIONS (inches) (width x length x height)	26 x 30 1/8 x 60 5/8	23 5/8 x 23 5/8 x 32 3/4
RACK SIZE (inches)	19 3/4 x 19 3/4	19 3/4 x 19 3/4
CLEARANCE (inches) = MAX WARE HEIGHT	17 1/3	14 7/8
PRODUCTION (racks/hour)	60	35
POWER (kW)	7.7	6.2
WASH PUMP (units x HP)	2 x 5/8	1 x 5/8
WATER CONSUMPTION (gallons/cycle)	0.63	0.63
MULTIPOWER	•	•
PRESSURE PUMP + AIR BREAK	•	•
DRAIN PUMP	o	•
RINSING AID DISPENSER	•	•
DETERGENT AID DISPENSER	•	•
DOUBLE SKIN BODY AND DOOR	-	•
DOUBLE WASH AND RINSING ARMS AISI-304 STAINLESS ST	•	•
IPX4 CONTROLS	•	•
S/S TRAY FILTERS ON THE TANK	•	•
MAGNETIC SWITCH FOR DOOR OR HOOD	•	•
HRS (Heat Recovery System)	o	-
HOT WATER ASSURANCE	•	•

• Standard   o Option   - Not version

## FEATURES

### HOOD-TYPE



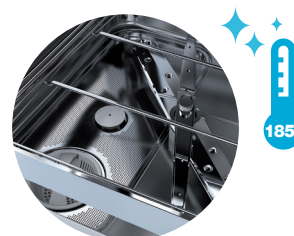
### UNDERCOUNTER





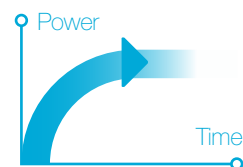
## The perfect solution

for those locations with low pressure water network and high production requirements



### 01. EFFI-RINSE

EFFI-RINSE system assures a perfect hygienic result with a linear 185°F full rinsing cycle thanks to its incorporated rinsing pump and air break system design. It also works with low input water pressure; becoming the perfect system when the installation water network does not reach the minimum recommended 2 bar. EFFI-RINSE green light displays when the system is taking care of your machine.



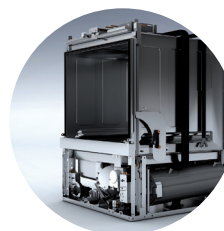
### 02. SOFT-START

It assures a low noise level of the bar or restaurant where it is installed and prevents the glasses and ware from moving inside the basket, protecting them from breaking and improving the washing cycle of all the ware. It consists in a wash-pump power control during its first stage.

### 03. ECO-FILL

Speed up drastically the start-up time of the machine with the NEW Thermostatic tank water filling system.

The water is previously heated in the boiler before filling the wash tank, making the process fast and efficient.





# High technology affordable for everyone.

For those who believe that technology  
and simplicity can go hand in hand,  
**E-VO CONCEPT** has landed.

A winner in its category that combines  
features and benefits that only high-end  
ranges are offering, becoming in a product  
easy to use and efficient, with the most  
effective and robust technology prepared  
for the strongest usage of the market.

## Energy saving



CO-5012W: -16%



## SPECIFICATIONS

	UNDERCOUNTER	GLASSWASHER
MODEL	<b>CO-502W</b>	<b>CO-402W</b>
DIMENSIONS (width x length x height) inches	23 5/8 x 23 5/8 x 32 3/4	18 1/2 x 20 1/2 x 28 3/8
BASKET SIZE (inches)	19 3/4 x 19 3/4	19 3/4 x 19 3/4
CLEARANCE (inches) = MAX WARE HEIGHT	14 7/8	10 7/8
PRODUCTION (baskets/hour)	22	22
POWER (kW)	6.2	3.06
WASH PUMP (units x HP)	2 x 5/8	1 x 5/8
WATER CONSUMPTION (gallons/cycle)	0.63	0.53
PRESSURE PUMP + AIR BREAK	-	-
PRESSURE GAUGE	•	-
DRAIN PUMP	•	•
RINSING AIR DISPENSER	•	•
DETERGENT AID DISPENSER	•	•
DOUBLE SKIN BODY / DOOR	•	- / •
DOUBLE WASH AND RINSING ARMS AISI-304 STAINLESS ST	•	•
IPX4 CONTROLS	•	•
S/S TRAY FILTERS ON THE TANK	•	•
MAGNETIC SWITCH FOR DOOR OR HOOD	•	•
HOT WATER ASSURANCE	•	-

• Standard    ◦ Option    - Not version

## FEATURES

### UNDERCOUNTER



### GLASSWASHERS



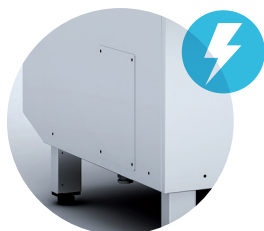




For those who believe that

**technology  
& simplicity**

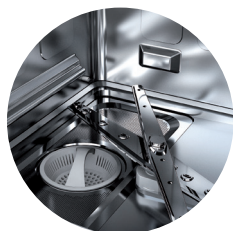
can go hand in hand.



### 01. MULTIPOWER AND MULTICONNECTION BOX

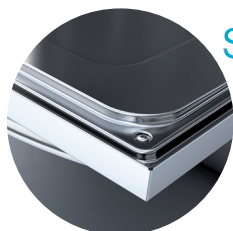
Several machines in one. Perfect solution to minimize your stock. By making an easy change in the electrical connecting box during the installation, you will be able to have a 3,4 kW machine or 6,2 kW or other powers.

No need to remove covers or panels anymore to install or check the network connectivity. Low risk to have problems during the electrical installation.



### 02. STAMPING PHILOSOPHY

A fully new stainless steel body and structure made to resist and resist to the strongest usage of the market. An evolved generation with stamped new door design, stamped wash tank and basket guides, stamped control panel...



shhh...

### 03. EFFI-SILENT

Full Double skin body to isolate machine's noise from the environment, making the atmosphere more peaceful. The door has double skin with special pressed isolation material, and stamped finishing to improve noise isolation and to keep the heat inside the machine, becoming in energy savings.



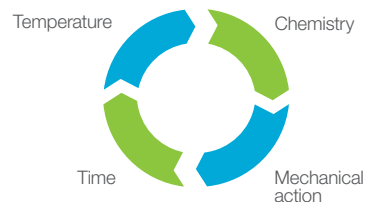
## Features

### EFFI WASH

#### EFFI-WASH

Newly optimized hydraulic system provides a strong mechanical action combined with the optimum clean water in the tank, and the balanced power to keep the perfect hygienic temperature during the whole lifetime of the machine. And all that, assuring the promised productivity.

A powerful system which assures one of the most important factors of the Sinner's cycle: mechanical action, saving high quantities of chemicals.



### EFFI RINSE

#### EFFI-RINSE

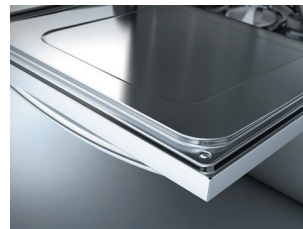
EFFI-RINSE system assures a perfect hygienic result with a linear 185°F full rinsing cycle thanks to its incorporated rinsing pump and air break system design. It also works with low input water pressure; becoming the perfect system when the installation water network does not reach the minimum recommended 2 bar pressure. EFFI-RINSE green light displays when the system is taking care of your machine.

**EFFI RINSE**  
SYSTEM

### EFFI SILENT

#### EFFI-SILENT

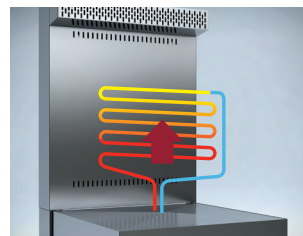
Full Double skin body to isolate machine's noise from the environment, making the atmosphere more peaceful. The door has double skin with special pressed isolation material, and stamped finishing to improve noise isolation and to keep the heat inside the machine, becoming in energy savings. The door system is designed to have a smooth and quiet close with top quality finishing.



### HRS

#### HRS

Fagor's HRS collects and condenses the steam exhausted by the machine after a full cleaning cycle, and heats up the input water from 50°F to 77°F (for example). Therefore it reduces the amount of energy used to heat the water with savings up to 40%. It also avoids the installation of expensive and complex hood extraction systems: 100% ventless.



### MULTI POWER

#### MULTIPOWER

If you want to have the highest power to maximize machine's productivity, you can, just connect the machine easily from outside (i.e. 9kW boiler). If you prefer a lower consumption, you can, make the proper connection (i.e. 3kW boiler). Several models in one machine. Easy installation and configuration.



### IPX4 HUMIDITY PROOF

#### IPX4 HUMIDITY PROTECTION

Designed to have a stronger protection IPx4 against water hose cleaning and external humidity.

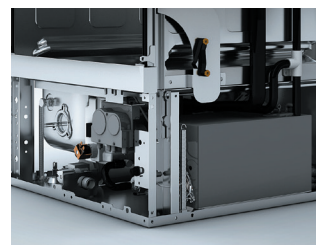




#### SOFT START

### SOFT-START

It assures a low noise level of the bar or restaurant where it is installed and prevents the glasses and ware from moving inside the basket, protecting them from breaking and improving the washing cycle of all the ware. It consists in a wash-pump power control during its first stage.



#### ECO FILL

### ECO FILL

The NEW Thermostatic tank water filling system: allows to speed up drastically the start-up time of the machine, because the wash tank is filled in with hot water previously heat in the boiler.



#### ROCK COUNTER- BALANCED DOOR

### ROCK COUNTERBALANCED DOOR

Double spring and stainless steel hinge system tested to resist the strongest usage of the market, with more than 360.000 openings.

It also protects the user from burnings with steam thanks to the 3 compensated steps designed: remove steam (1), check basket (2), and remove/place basket (3).



#### STAMPED PHILOSOPHY

### STAMPED PHILOSOPHY

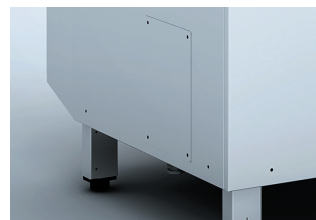
A fully new stainless steel body and structure made to resist and resist to the strongest usage of the market. An evolved generation with stamped new door design, stamped wash tank and basket guides, stamped control panel... This philosophy reduces your running costs so that you will spend less time cleaning and increase machine's lifetime.



#### MULTI CONNECTION BOX

### MULTI-CONNECTION BOX

No need to remove covers or panels anymore to install or check the network connectivity. Low risk to have problems during the electrical installation. A new multi-connection box has been designed in order to improve accessibility, minimize installation issues, and reduce maintenance costs. Make single or three phases connection by only opening the small box cover.



## FEATURES BY RANGE

RANGE	E-VO CONCEPT+		E-VO CONCEPT	
MACHINE TYPE	HOOD-TYPE	UNDER-COUNTER	UNDER-COUNTER	GLASSWASHERS
EFFI-WASH	•	•	•	•
EFFI-RINSE	•	•	-	-
EFFI-SILENT	-	•	•	-
HRS	0	-	-	-
MULTIPOWER	-	-	-	-
SOFT-START	•	•	•	-
ECO FILL	•	•	-	-
ROCK COUNTERBALANCED DOOR	-	•	•	-
SOFT-LIFT	•	-	-	-
STAMPED PHILOSOPHY	•	•	•	-
IPx4 HUMIDITY-PROOF	•	•	•	•
MULTI-CONNECTION BOX	•	•	•	-

• Series    ○ Option    - Not version

## BENEFITS



ECONOMY



ECOLOGY



HYGIENE



SIMPLICITY,  
ROBUSTNESS,  
RELIABILITY



VERSATILITY  
& FLEXIBILITY



SAFETY



ERGONOMICS

## BENEFITS VS FEATURES

BENEFITS VS FEATURES	HYGIENE	ECOLOGY	ECONOMY	SAFETY	ERGONOMICS	VERSATILITY & FLEXIBILITY	ROBUSTNESS, SIMPLICITY, RELIABILITY...
EFFI-WASH	•	•	•	•			
EFFI-RINSE	•	•	•	•			
EFFI-SILENT		•	•				
HRS	•	•	•	•		•	
MULTIPOWER				•	•	•	•
SOFT-START		•	•	•			
ECO FILL	•	•	•	•			
ROCK COUNTERBALANCED DOOR				•	•		•
SOFT-LIFT				•	•		•
STAMPED PHILOSOPHY	•			•	•	•	•
IPx4 HUMIDITY-PROOF				•			•
MULTI-CONNECTION BOX				•	•	•	

# TECHNICAL DATA

RANGE	E-VO CONCEPT+		E-VO CONCEPT	
MACHINE TYPE	HOOD TYPE	UNDER COUNTER	UNDER COUNTER	GLASSWASHERS
MODEL	COP-174W (HRS)	COP-504W	CO-502W	CO-402W
Wash Cycles (seconds)	55-75-120	60-90-180	60-90-180	90-120-180
Continuos cycle	•	-	-	-
Max Productivity (*)				
Baskets/hour	60	40	30	30
Dishes/hour	1080	720	540	-
Glasses/hour	2160	1440	1080	1080
Standard Basket size (inches)	19 3/4 x 19 3/4	19 3/4 x 19 3/4	19 3/4 x 19 3/4	15 3/4 x 15 3/4
Able for 12 x 20 pans	•	•	•	-
Dimensions (inches)				
Width	26	23 5/8	23 5/8	18 1/2
Depth	30 1/8	23 5/8	23 5/8	20 1/2
Height	60 5/8	32 3/4	32 3/4	28 3/8
Useful Loading Height (clearance)	17 1/3	15 3/8	15 3/8	10 7/8
Open Hood Height	81 1/3	-	-	-
Capacity (gallons)				
Wash Tank	8.98	5.28	5.28	3.43
Boiler	2.37	1.85	1.85	1.05
Water consumption per cycle	0.63	0.63	0.63	0.53
Power (kW)				
Tank heating element	4.5	2.8	2.8	2
Boiler/Booster heating element	12	1.8 - 3.7 - 5.6	2.8	2.8
Wash pump(s)	2 x 0.6	0.6	0.6	0.26
Rinse pump	0.26	0.26	-	-
Total power	17.7	6.2	6.2	3.06
Working Temperature (°F)				
Washing	140	140	140	140
Rinsing	185	185	185	185
Multipower	•	•	-	-
Multitension (230 V-1N / 230 V-3 / 400 V-3N)	•	•	•	-
Water Protection Rating	IPx4	IPx4	IPx4	IPx4
Noise level (dBA)	<65	<65	<65	<70
Rinsing Aid Dispenser	•	•	•	•
Detergent Aid Dispenser	•	•	•	•
Drain Pump	O	•	•	•
Pressure Pump	•	•	-	-
Double Skin Door	-	•	•	•
Double Skin Body	-	•	•	-
Wash & Rinse Arms - AISI-304	•	•	•	•
Filter trays AISI-304 in the wash tank	•	•	•	-
Electronic control panel and thermal-stop	•	•	•	•

- Standard
- O Option
- Not version

(\*) Assumed 18 dishes/rack 36 glasses/basket and 7 trays/rack  
Fagor reserves all rights to modify the data included in this catalogue.





FAGOR COMMERCIAL

FAGOR COMMERCIAL INC  
13105 NW 47th Ave.  
33054 Miami, FL (USA)  
T. +1 (305) 779 0170  
F. +1 (305) 779 0173  
info@fagorcommercial.com

[www.fagorcommercial.com](http://www.fagorcommercial.com)



ISO 9001



ONNERA GROUP