

COMPACT series

MUCH MORE THAN PROFESSIONAL LAUNDRY.



MAIN CHARACTERISTICS

MORE FEATURES

- New second-generation TOUCH PLUS programmer with 4.3" touch screen
- Allows programming and traceability of data with USB
- WET CLEANING capabilities
- Designed for remote connections.
- Designed for multipayment system.
- 8 automatic liquid dosing Signals.

MORE VERSATILITY

- ONE UNIT COLUMN Standard model easily installable in column.
- Electric models easily convertible to hot water models and vice versa.
- Drain valve and drain pump models are easily convertible. Friendly access for maintenance.

MORE ROBUSTNESS

- Unit in grey skin plate.
- Tank, drum and paddles in Stainless Steel AISI 304.
- Robust door made of aluminum
- Industrial door lock.
- Industrial machine door seal (no inner drum seal).
- Industrial housing and bearings.
- Frequency converter and industrial motor.

MORE EFFICIENCY

- Intelligent and manual weighing system. Automatic adjustment of water and chemicals.
- Possibility of configuring three levels of savings.
- Designed for mounting onto stand with water recovery tank.
- High G Force 450. Reduce residual moisture and drying time.

OTHER CHARACTERISTICS

- Tank with 4 detergent compartments.
- 2 standard water inlets.
- Equipped with variable-frequency drive (standard 50-60 Hz). Balancing system controlled by the same drive.

- Model with drain valve (V) and model with drain pump (P).
- Model with valve specially designed for washing mops.
- Includes leveler feet.

OPTIONS

- Double drain (only valve model).
- Drain pump kit.
- 6 extra signals for dosing
- Silicone door seal.
- Delayed door opening device, in case of power failure.
- Unit in AISI 304 stainless steel.
- Plinth that facilitates access to the machine.
- Special mop plinth (with filter) valve models only.
- Plinth and water recovery tank
- Kits for vended applications



FAGOR COMMERCIAL, Inc.
13105 NW 47th Avenue, Opa Locka, FL, 33054
T. (+1) 305 779 0170 | 866 GO FAGOR
info@fagorcommercial.com
www.fagorcommercial.com



ONNERA GROUP



WASHER EXTRACTORS | KARE GENERATION | COMPACT SERIES



kare

GENERATION

IT CARES ABOUT YOU,
IT CARES ABOUT THE ENVIROMENT



High spin (FWH)

Fast spin (FWR)

Normal spin (FWS)



MAIN CHARACTERISTICS

- Drum and jacket in AISI-304 stainless steel.
- Unit exterior manufactured in skin plate, color grey, stainless steel appearance.
Exemption: FWH-275 (full stainless steel)
- Tank with 4 detergent compartments.
- Tank with 5 detergent compartments (FWH-100, FWH-135, FWH-275)
- 8 automatic liquid dosing signals, with programmable time and delay. 6 extra signals available optionally.
- 3 standard water inlets.
- Variable-frequency drive (standard 50-60 Hz). Balancing system controlled by the same drive.
- New second-generation TOUCH PLUS programmer with 7" touch screen, 37 available languages and which lets you create an indefinite number of programs (29 pre-set).
- Traceability as standard: the whole wash process (temperatures, water levels) is stored on the washer and is extractable to a PC by USB memory.
- Allows programming, importing and exporting of programs and software updates via USB.
- WET CLEANING characteristics included in the scheduler (modifiable water levels and washing speed).
- Intelligent weighing system or manual load indication system to optimize water

and detergent consumption at lower loads.

- "LOADING AID" system, water inlet and spin control to load the linen.
- The standard model can be converted to self-service by installing a pay station kit, coin mechanism kit or other payment system. RS-485 communication.
- Washers compatible with water recovery tanks.

OPTIONS

- Double Drain Kits.
- Additional Voltages.
- Coin Kits (Coin box not included).
- Full Stainless Steel Cabinet.
- Electric Drain Pump Kit (25 & 30 lbs.).
- Automatic Door Unlock System.
- Silicone Gaskets.
- Weighting System (High Spin).
- Tilting System (High Spin 100, 135 & 275 lbs.).
- Fagoremove for remote connectivity.

LAUNDRY | KARE

A SOLUTION FOR
EVERY CUSTOMER

FAGOR INDUSTRIAL adapts to each user's needs,
offering a wide range of options.

HIGH SPIN | G-FORCE: 450 (FWH-275 G-FORCE:350)

CONTROL TYPE	HEATING	CAPACITY							
		23-25 lbs	29-31 lbs	40-44 lbs	55-62 lbs	77-86 lbs	99-110 lbs	132-146 lbs	265-298 lbs
Touch Plus Control (TP2)	Electric, hot water and steam	FWH-25 TP2	FWH-30 TP2	FWH-40 TP2	FWH-60 TP2	FWH-80 TP2	FWH-100 TP2	FWH-135 TP2	FWH-275 TP2
Touch Plus Control (TP2) Vended	Electric and hot water	FWH-25 TP2	FWH-30 TP2	FWH-40 TP2	FWH-60 TP2	FWH-80 TP2	-	-	-

1. Electric. Voltage: 208-240V / 50-60Hz / 3
2. Steam & Hot Water. Voltage: 208-240 V / 50-60Hz / 1 (Up to 60 lbs.) & 208-240V / 50-60Hz / 3 (From 80 lbs. on)

FAST SPIN | G-FORCE: 300

CONTROL TYPE	HEATING	CAPACITY			
		23-25 lbs	29-31 lbs	40-44 lbs	55-62 lbs
Touch Plus Control (TP2)	Electric, hot water and steam	FWR-25 TP2	FWR-30 TP2	FWR-40 TP2	FWR-60 TP2
Touch Plus Control (TP2) Vended	Electric and hot water	FWR-25 TP2	FWR-30 TP2	FWR-40 TP2	FWR-60 TP2

1. Electric. Voltage: 208-240V / 50-60Hz / 3
2. Steam & Hot Water. Voltage: 208-240 V / 50-60Hz / 1

NORMAL SPIN | G-FORCE: 200 (FWS-135 G-FORCE: 150)

CONTROL TYPE	HEATING	CAPACITY					
		23-25 lbs	29-31 lbs	40-44 lbs	55-62 lbs	77-86 lbs	132-146 lbs
Touch Plus Control (TP2)	Electric, hot water and steam	FWS-25 TP2	FWS-30 TP2	FWS-40 TP2	FWS-60 TP2	FWS-80 TP2	FWS-135 TP2
Touch Plus Control (TP2) Vended	Electric and hot water	FWS-25 TP2	FWS-30 TP2	FWS-40 TP2	FWS-60 TP2	FWS-80 TP2	FWS-135 TP2

1. Electric. Voltage: 208-240V / 50-60Hz / 3
2. Steam & Hot Water. Voltage: 208-240 V / 50-60Hz / 1 (Up to 80 lbs.) & 208-240V / 50-60Hz / 3 (135 lbs.).

COMPACT series

HIGH SPIN | G-FORCE: 450

CONTROL TYPE	HEATING	CAPACITY			
		20 lbs	20 lbs	25 lbs	25 lbs
Touch Plus Control (TP2)	Electric, hot water	LAP-0820 TP2 V	LAP-0820 TP2 P	LAP-1025 TP2 V	LAP-1025 TP2 P
Touch Plus Control (TP2) Vended	Electric, hot water	LAP-0820 TP2 V	LAP-0820 TP2 P	LAP-1025 TP2 V	LAP-1025 TP2 P

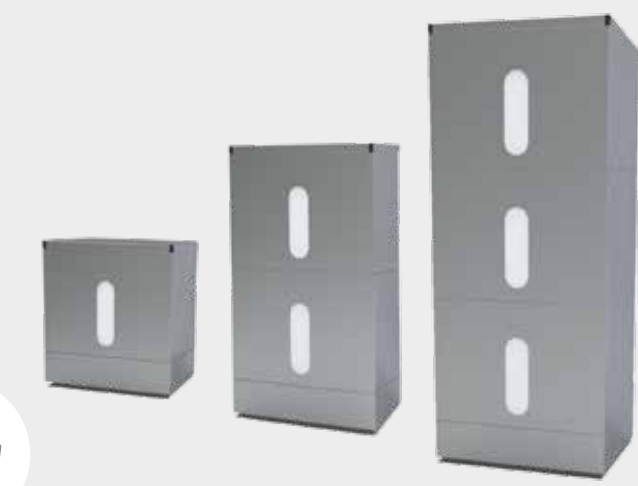
1. Electric. Voltage: 208-240V / 50-60Hz / 3 / 1.
2. Hot water. Voltage: 110-120V/60Hz/1.
3. V for Drain Valve and P for Drain Pump.

kRS

kare Recovery System

WATER RECOVERY SYSTEM

SAVE WATER, ENERGY AND CHEMICALS.
AND RECOVER YOUR INVESTMENT.



MAIN CHARACTERISTICS

- Outer panels constructed in stainless steel effect sandwich panel
- Tanks manufactured in high density polyethylene (HDPE)
- Standard parts, necessary for assembly to the washer, included with the **kRS** reclaimers
 - Additional electronic device (the same used to add 6 additional dosage signals)
 - Water filtration system
- Simple PLUG and PLAY installation
 - Easy to install with washers that have Touch Control
 - Does not require any additional in situ installation
 - The water inlet, water outlet and condensate outlet connections are incorporated into each tank.
- Tanks easy to remove for cleaning
 - 2 water level sensors in each tank (maximum and minimum level)
 - The water recovery system fills each tank by means of fill valves.
 - Tank self-cleaning programs from the Touch Control of the washer.

MODEL	Number of TANKS	CAPACITY PER TANK (gallons)	VALID FOR WASHERS
WREC-80 T1/T2/T3	1/2/3	21	FWH / FWR / FWS - 25 / 30 / 40
WREC-150 T1/T2/T3	1/2/3	40	FWH / FWR / FWS - 60 / 80