



WASHING

NORMAL SPIN WASHERS LOW AND MEDIUM CAPACITY FWS-25 TP2



FEATURES

Touch Plus Control

- 7" touchscreen, user friendly and totally programmable.
- Videos on display, ads, instructions.
- Free software for programming, telemetry, data analysis.
- USB Connection.
- 37 Languages.
- 8 dosing signals.

G FACTOR

- High G-Factor of 200.

EFFICIENCY

- Energy Optimization.
- Optimal load.
- Low water consumption.

VERSATILITY

- Custom- Make to order.
- OPL or COIN.
- Electric or Hot water.
- Wet cleaning features.

CONNECTIVITY

- IoT - Fagor-Konnnect standard.
- Remote technical service.
- Laundry Management system: OPL and COIN.

ERGONOMICS

- Biggest door diameter: Ø373.
- Modern lock for easy opening and closing of door

MAINTENANCE

- Hinged panel: for easy access to control panel parts.
- Technical setting: telemetry, error diagnosis, monitoring, software updates.

OTHERS

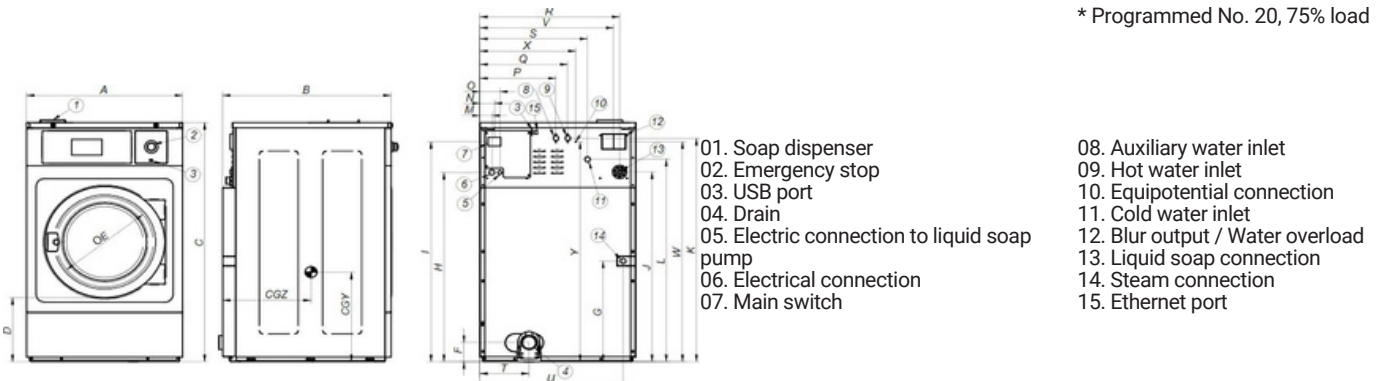
- Hard mounted washers.
- Anchoring to floor with anchoring base.
- Panels in skin plate.
- Drum and tub in stainless steel AISI 304
- 3 water inlets.
- CB and WRAS approved product Option ETL.

OPTIONS

- DQ-2 Dosing pump kit.
- Extra dosing pump DB-1.
- SLUICE: model with 0.31 In drum holes.
- Anchoring base.
- External double drain 3".
- Water FULL FLOW: recirculation of bath water.
- Relay card with 6 extra dosing signals: up to 14 signals.
- Silicone gasket.
- Reversible door opening.
- Tropicalized coating.
- Steam kit to transform an E or HW heated machine into steam version.
- Stainless steel AISI 304 outer casing.
- Stainless steel AISI 304 front panel.
- Coin / token kit.
- Auto unlock kit for the door.

DRUM		U.	FWS-25 TP2	
Load capacity	1:9 / 1:10	Lb.	24.3/22.1	
Volume		CU.FT	3.5	
Diameter		In	24.4	
Depth		In	13	
GENERAL DETAILS				
Washing speed / Spinning speed		r.p.m.	53/759	
G Factor		-	200	
Maximum force transmitted		KN	2,0 ±3	
Frequency-dynamic force		Hz	8.93	
Noise level		dB	<70	
Coin laundry version		-	Yes	
Double drain		-	No	
Weighing System / Tilting System		-	No	
SLUICE option		-	Yes	
DOOR				
Height center door / Height door		In	22.5/12.2	
Diameter		In	14.3	
POWER				
Motor		Hp	1.5	
Electric heating power		kW	6	
Total electric power (electric model)		kW	6.25	
Total electric power (hw, steam model)		kW	1.1	
CONNECTIONS		ELECTRIC		STEAM / HOT WATER
Voltage 208-240/60/1~ + G	N° x AWG / A	3 x 8 / 35A		3 x 14/ 15A
Voltage 208-240/60/3~ + G	N° x AWG / A	4 x 12 / 20A		-
Voltage 440-480/3 ~ + G	N° x AWG / A	4 x 14 / 15A		-
Steam inlet (Steam model)	inch	1/2"		
Maximum steam consumption (Steam model)	lbs/h	7		
Water inlet	inch	3/4"		
Water main pressure	Kg/cm2	2-4		
Maximum water consumption	Gal/h	16.2*		
Drain	mm/inch	3"		
Drainage capacity	Gal/min	52.8		
DIMENSIONS / PACKING DIMENSIONS				
Net Width / Gross Width		In	28.3/30.8	
Net Depth / Gross Depth		In	26.9/35.1	
Net Height / Gross Height		In	45.5/55.2	
Net weight / Gross weight		Lbs.	436.6/510.7	
Volume		Ft3	34.3	

* Programmed No. 20, 75% load



	A	B	C	D	E	F	G	H	I	J	K	L	M	N	O	P	Q	R	S	T	U	V	W	X	Y	CGY	CGZ	
FWS-25	mm	719	684	1158	310	373	144	440	886	1054	889	1073	958	61	74	101	316	376	637	475	211	654	607	1073	424	1118	383	511
	In	28.31	26.93	45.59	12.20	14.69	5.67	17.32	34.88	41.50	35.00	42.24	37.72	2.40	2.91	3.98	12.44	14.80	25.08	18.70	8.31	25.75	23.90	42.24	16.69	44.02	15.08	20.12



WASHING

NORMAL SPIN WASHERS LOW AND MEDIUM CAPACITY FWS-30 TP2



FEATURES

Touch Plus Control

- 7" touchscreen, user friendly and totally programmable.
- Videos on display, ads, instructions.
- Free software for programming, telemetry, data analysis.
- USB Connection.
- 37 Languages.
- 8 dosing signals.

G FACTOR

- High G-Factor of 200.

EFFICIENCY

- Energy Optimization.
- Optimal load.
- Low water consumption.

VERSATILITY

- Custom- Make to order.
- OPL or COIN.
- Electric or Hot water.
- Wet cleaning features.

CONNECTIVITY

- IoT - Fagor-Konnnect standard.
- Remote technical service.
- Laundry Management system: OPL and COIN.

ERGONOMICS

- Biggest door diameter: Ø373.
- Easy opening/closing system for door lock.

MAINTENANCE

- Hinged panel: for easy access to control panel parts.

Technical setting:

telemetry, error diagnosis, monitoring, software updates.

OTHERS

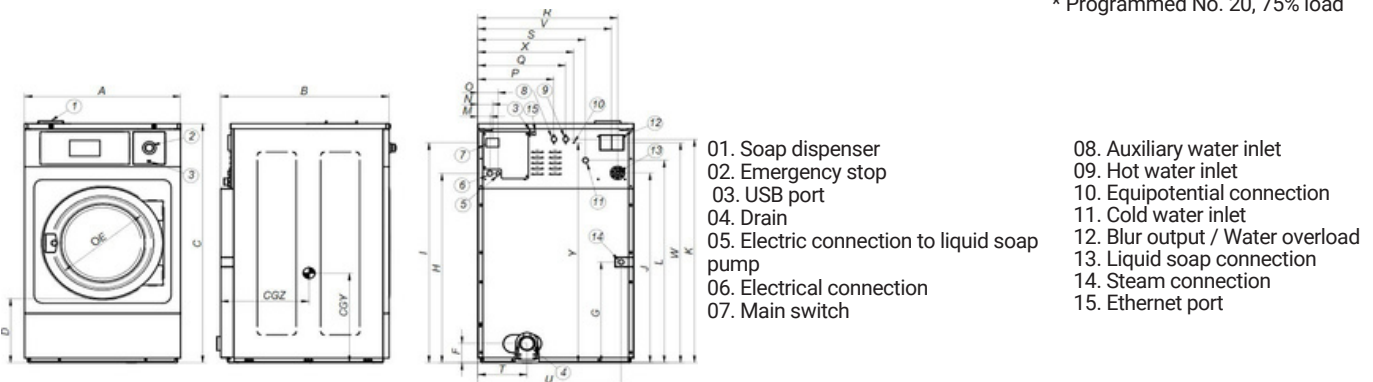
- Hard mounted washers.
- Anchoring to floor with anchoring base.
- Panels in skin plate.
- Drum and tub in stainless steel AISI 304
- 3 water inlets.
- CB and WRAS approved product Option ETL.

OPTIONS

- DQ-2 Dosing pump kit.
- Extra dosing pump DB-1.
- SLUICE: model with 0.31 In drum holes.
- Anchoring base. • External double drain 3".
- Water FULL FLOW: recirculation of bath water.
- Relay card with 6 extra dosing signals: up to 14 signals.
- Silicone gasket.
- Reversible door opening.
- Tropicalized coating.
- Steam kit to transform an E or HW heated machine into steam version.
- Stainless steel AISI 304 outer casing.
- Stainless steel AISI 304 front panel.
- Coin / token kit.
- Auto unlock kit for the door.

DRUM		U.	FWS - 30 TP2	
Load capacity 1:9 / 1:10		Lb.	30.9/28.7	
Volume		CU.FT	4.6	
Diameter		In	24.4	
Depth		In	16.9	
GENERAL DETAILS				
Washing speed / Spinning speed		r.p.m.	53/759	
G Factor		-	200	
Maximum force transmitted		KN	2.31 ±4	
Frequency-dynamic force		Hz	8,93	
Noise level		dB	<70	
Coin laundry version		-	Yes	
Double drain		-	Opt.	
Weighing System / Tilting System		-	No	
SLUICE option		-	Yes	
DOOR				
Height center door / Height door		In	22.5/12.2	
Diameter		In	14.7	
POWER				
Motor		Hp	1.5	
Electric heating power		kW	9	
Total electric power (electric model)		kW	9.5	
Total electric power (hw, steam model)		kW	1.1	
CONNECTIONS		ELECTRIC		STEAM / HOT WATER
Voltage 208-240/60/1~ + G	N° x AWG / A	3 x 6 / 50A		3x 14 / 15A
Voltage 208-240/60/3~ + G	N° x AWG / A	4 x 10 / 32A		-
Voltage 440-480/3 ~ + G	N° x AWG / A	4 x 12 / 20A		-
Steam inlet (Steam model)	inch	1/2"		
Maximum steam consumption (Steam model)	lbs/h	8,5		
Water inlet	inch	3/4"		
Water main pressure	Kg/cm2	2-4		
Maximum water consumption	Gal/h	20,8*		
Drain	mm/inch	3"		
Drainage capacity	Gal/min	52.8		
DIMENSIONS / PACKING DIMENSIONS				
Net Width / Gross Width		In	28.31/30.8	
Net Depth / Gross Depth		In	33.70/39.0	
Net Height / Gross Height		In	45.87/55.2	
Net weight / Gross weight		Lbs.	463.1/540.2	
Volume		Ft3	38.1	

* Programmed No. 20, 75% load



	A	B	C	D	E	F	G	H	I	J	K	L	M	N	O	P	Q	R	S	T	U	V	W	X	Y	CGY	CGZ	
FWS-30	mm	719	856	1165	310	373	143	440	886	1.054	889	1073	958	61	74	101	316	376	637	475	211	654	607	1053	416	1053	484	524
	In	28.31	33.70	45.87	12.20	14.69	5.83	17.32	34.88	41.50	35.00	42.24	37.72	2.40	2.91	3.98	12.44	14.80	25.08	18.70	8.31	25.75	23.90	41.46	16.38	41.46	19.06	20.63



WASHING

NORMAL SPIN WASHERS LOW AND MEDIUM CAPACITY FWS-40 TP2



FEATURES

Touch Plus Control

- 7" touchscreen, user friendly and totally programmable.
- Videos on display, ads, instructions.
- Free software for programming, telemetry, data analysis.
- USB Connection.
- 37 Languages.
- 8 dosing signals.

G FACTOR

- G-FACTOR 200.

EFFICIENCY

- Energy Optimization.
- Optimal load.
- Low water consumption.

VERSATILITY

- Custom- Make to order.
- OPL or COIN.
- Electric or Hot water.
- Wet cleaning features.

CONNECTIVITY

- IoT - Fagor-Konnnect standard.
- Remote technical service.
- Laundry Management system: OPL and COIN.

ERGONOMICS

- Biggest door diameter: Ø460.
- Easy opening/closing system for door lock.

MAINTENANCE

- Hinged panel: easy access to parts.
- Equivalent parts for all models: contactors, electronic devices, gear.
- Technical menu: traceability, error diagnosis.

OTHERS

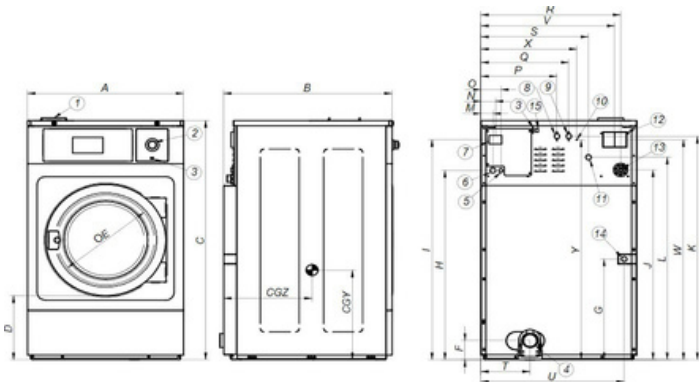
- Hard mounted washers.
- Anchoring to floor with anchoring base.
- Panels in skin plate.
- Drum and tub in stainless steel AISI 304
- 3 water inlets.
- CB and WRAS approved product Option ETL.

OPTIONS

- DQ-2 Dosing pump kit.
- Extra dosing pump DB-1.
- SLUICE: model with 0.31 In drum holes.
- Anchoring base.
- Double drain.
- Water RE-CYCLE: recirculation of bath water.
- Relay card with 6 extra dosing signals: up to 14 signals.
- Silicone gasket.
- Reversible door opening.
- Tropicalized coating.
- Steam kit to transform an E or HW heated machine into steam version.
- Stainless steel AISI 304 outer casing.
- Stainless steel AISI 304 front panel.
- Coin / token kit.
- Auto unlock kit for the door.

DRUM			
	U.	FWS - 40 TP2	
Load capacity 1:9 / 1:10	Lb.	44.1/39.7	
Volume	CU.FT	6.5	
Diameter	In	27.6	
Depth	In	18.5	
GENERAL DETAILS			
Washing speed / Spinning speed	r.p.m.	50/714	
G Factor	-	200	
Maximum force transmitted	KN	2.63 ±5	
Frequency-dynamic force	Hz	8.42	
Noise level	dB	<70	
Coin laundry version	-	Yes	
Double drain	-	Opt.	
Weighing System / Tilting System	-	No	
SLUICE option	-	Yes	
DOOR			
Height center door / Height door	In	25.8/13.7	
Diameter	In	18.1	
POWER			
Motor	Hp	3	
Electric heating power	kW	12	
Total electric power (electric model)	kW	12.75	
Total electric power (hw, steam model)	kW	2.2	
CONNECTIONS		ELECTRIC	STEAM / HOT WATER
Voltage 208-240/60/1~ + G	N° x AWG / A	3 x 10 / 70A	3 x 14 / 15A
Voltage 208-240/60/3~ + G	N° x AWG / A	4 x 8 / 40A	-
Voltage 440-480/3 ~ + G	N° x AWG / A	4 x 10 / 30A	-
Steam inlet (Steam model)	inch	1/2"	
Maximum steam consumption (Steam model)	lbs/h	12	
Water inlet	inch	3/4"	
Water main pressure	Kg/cm2	2-4	
Maximum water consumption	Gal/h	31.7*	
Drain	mm/inch	3"	
Drainage capacity	Gal/min	52.8	
DIMENSIONS / PACKING DIMENSIONS			
Net Width / Gross Width	In	31.02/33.5	
Net Depth / Gross Depth	In	33.07/39.9	
Net Height / Gross Height	In	51.46/62.4	
Net weight / Gross weight	Lbs.	599.8/681.3	
Volume	Ft3	48	

* Programmed No. 20, 75% load



- 01. Soap dispenser
- 02. Emergency stop
- 03. USB port
- 04. Drain
- 05. Electric connection to liquid soap pump
- 06. Electrical connection
- 07. Main switch
- 08. Auxiliary water inlet
- 09. Hot water inlet
- 10. Equipotential connection
- 11. Cold water inlet
- 12. Blur output / Water overload
- 13. Liquid soap connection
- 14. Steam connection
- 15. Ethernet port

	A	B	C	D	E	F	G	H	I	J	K	L	M	N	O	P	Q	R	S	T	U	V	W	X	Y	CGY	CGZ	
FWS - 40	mm	788	935	1307	348	460	143	552	1035	1203	1038	1222	1107	61	74	101	385	445	706	544	245	724	676	1202	485	1202	479	546
	In	31.02	36.81	51.46	13.70	18.11	5.63	21.73	40.75	47.36	40.87	48.11	43.58	2.40	2.91	3.98	15.16	17.52	27.80	21.42	9.65	28.50	26.61	47.32	19.09	47.32	18.86	21.50



WASHING

NORMAL SPIN WASHERS LOW AND MEDIUM CAPACITY FWS-50 TP2



FEATURES

Touch Plus Control

- 7" touchscreen, user friendly and totally programmable.
- Videos on display, ads, instructions.
- Free software for programming, telemetry, data analysis.
- USB Connection.
- 37 Languages.
- 8 dosing signals.

G FACTOR

- G-FACTOR 200.

EFFICIENCY

- Energy Optimization.
- Optimal load.
- Low water consumption.

VERSATILITY

- Custom- Make to order.
- OPL or COIN.
- Electric or Hot water.
- Wet cleaning features.

CONNECTIVITY

- IoT - Fagor-Konnect standard.
- Remote technical service.
- Laundry Management system: OPL and COIN.

ERGONOMICS

- Biggest door diameter: Ø460.
- Easy opening/closing system for door lock.

MAINTENANCE

- Hinged panel: easy access to parts.
- Equivalent parts for all models: contactors, electronic devices, gear.
- Technical menu: traceability, error diagnosis.

OTHERS

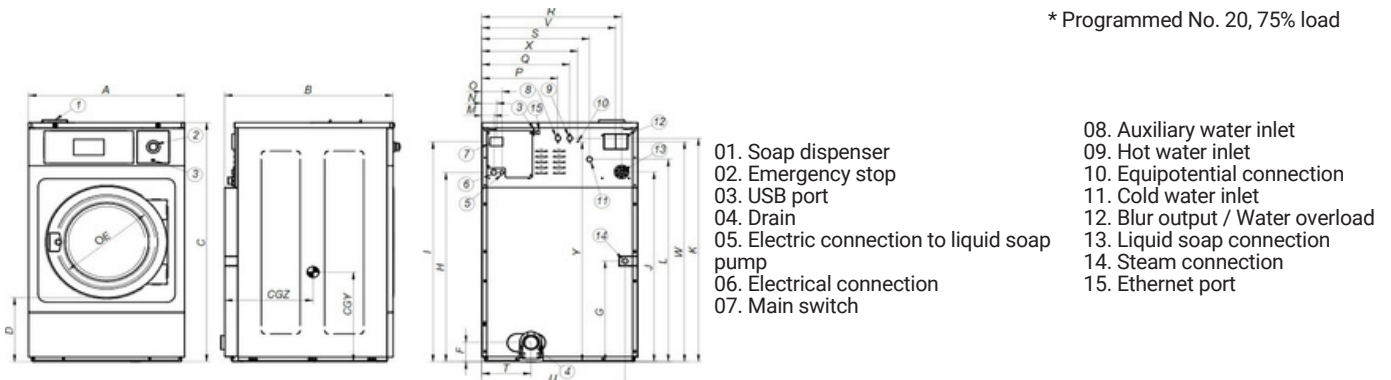
- Hard mounted washers.
- Anchoring to floor with anchoring base.
- Panels in skin plate.
- Drum and tub in stainless steel AISI 304
- 3 water inlets.
- CB and WRAS approved product Option ETL.

OPTIONS

- DQ-2 Dosing pump kit.
- Extra dosing pump DB-1.
- SLUICE: model with 0.31 In drum holes.
- Anchoring base.
- Double drain.
- Water RE-CYCLE: recirculation of bath water.
- Relay card with 6 extra dosing signals: up to 14 signals.
- Silicone gasket.
- Reversible door opening.
- Tropicalized coating.
- Steam kit to transform an E or HW heated machine into steam version.
- Stainless steel AISI 304 outer casing.
- Stainless steel AISI 304 front panel.
- Coin / token kit.
- Auto unlock kit for the door.

DRUM		U.	FWS-50 TP2	
Load capacity	1:9 / 1:10	Lb.	55.1/48.5	
Volume		CU.FT	7.8	
Diameter		In	27.6	
Depth		In	22.1	
GENERAL DETAILS				
Washing speed / Spinning speed		r.p.m.	50/714	
G Factor		-	200	
Maximum force transmitted		KN	3.04 ±5	
Frequency-dynamic force		Hz	8.42	
Noise level		dB	<70	
Coin laundry version		-	Yes	
Double drain		-	Opt.	
Weighing System / Tilting System		-	No	
SLUICE option		-	Yes	
DOOR				
Height center door / Height door		In	25.8/13.7	
Diameter		In	18.1	
POWER				
Motor		Hp	3	
Electric heating power		kW	12	
Total electric power (electric model)		kW	12.75	
Total electric power (hw, steam model)		kW	2.2	
CONNECTIONS			ELECTRIC	STEAM / HOT WATER
Voltage 208-240/60/1~ + G		N° x AWG / A	3 x 10 / 70A	3 x 14 / 15A
Voltage 230/3~ + G		N° x AWG / A	4 x 8 / 40A	-
Voltage 440-480/3 ~ + G		N° x AWG / A	4 x 10 / 30A	-
Steam inlet (Steam model)		inch	1/2"	
Maximum steam consumption (Steam model)		lbs/h	12	
Water inlet		inch	3/4"	
Water main pressure		Kg/cm2	2-4	
Maximum water consumption		Gal/h	31.7*	
Drain		mm/inch	3"	
Drainage capacity		Gal/min	52.8	
DIMENSIONS / PACKING DIMENSIONS				
Net Width / Gross Width		In	31.02/33.5	
Net Depth / Gross Depth		In	40.75/43.6	
Net Height / Gross Height		In	51.46/62.4	
Net weight / Gross weight		Lbs.	650.5/738.7	
Volume		Ft3	53	

* Programmed No. 20, 75% load



		A	B	C	D	E	F	G	H	I	J	K	L	M	N	O	P	Q	R	S	T	U	V	W	X	Y	CGY	CGZ
FWS-50	mm	788	1035	1307	348	460	143	552	1035	1203	1038	1222	1107	61	74	101	385	445	706	544	245	724	676	1202	485	1202	479	586
	In	31.02	40.75	51.46	13.70	18.11	53.63	21.73	40.75	47.36	40.87	48.11	43.58	2.40	2.91	3.98	15.16	17.52	27.80	21.42	9.65	28.50	26.61	47.32	19.09	47.32	18.86	23.07



WASHING

NORMAL SPIN WASHERS LOW AND MEDIUM CAPACITY FWS - 65 TP2



FEATURES

Touch Plus Control

- 7" touchscreen, user friendly and totally programmable.
- Videos on display, ads, instructions.
- Free software for programming, telemetry, data analysis.
- USB Connection.
- 37 Languages.
- 8 dosing signals.

G FACTOR

- G-FACTOR 200.

EFFICIENCY

- Energy Optimization.
- Optimal load.
- Low water consumption.

VERSATILITY

- Custom- Make to order.
- OPL or COIN.
- Electric or Hot water.
- Wet cleaning features.

CONNECTIVITY

- IoT - Fagor-Konnect standard.
- Remote technical service.
- Laundry Management system: OPL and COIN.

ERGONOMICS

- Biggest door diameter: Ø460.
- Easy opening/closing system for door lock.

MAINTENANCE

- Hinged panel: easy and ergonomic access.
- Equivalent parts for all models: contactors, electronic devices,...
- Technical menu: telemetry, error diagnosis.

OTHERS

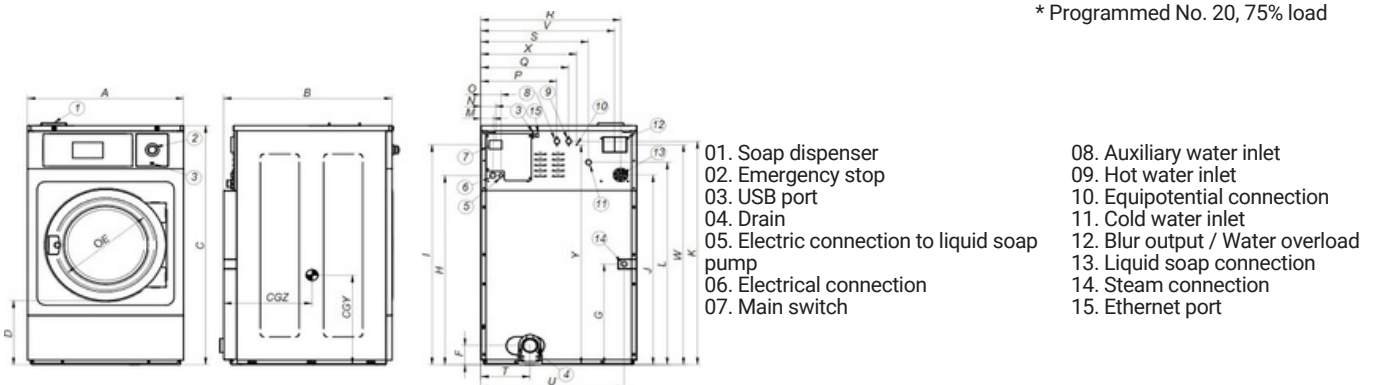
- Hard mounted washers.
- Anchoring to floor with anchoring base.
- Panels in skin plate.
- Drum and tub in stainless steel AISI 304
- 3 water inlets.
- CB and WRAS approved product Option ETL.

OPTIONS

- DQ-2 Dosing pump kit.
- Extra dosing pump DB-1.
- SLUICE: model with 0.31 In drum holes.
- Anchoring base.
- Double drain.
- Normally closed valve.
- Water RE-CYCLE: recirculation of bath water.
- Relay card with 6 extra dosing signals: up to 14 signals.
- Silicone gasket.
- Reversible door opening.
- Tropicalized coating.
- Steam kit to transform an E or HW heated machine into steam version.
- Stainless steel AISI 304 outer casing.
- Stainless steel AISI 304 front panel.
- Coin / token kit.
- Auto unlock kit for the door.

DRUM		U.	FWS-65 TP2	
Load capacity	1:9 / 1:10	Lb.	68.4/61.7	
Volume		CU.FT	9.8	
Diameter		In	30.3	
Depth		In	23	
GENERAL DETAILS				
Washing speed / Spinning speed		r.p.m.	48/682	
G Factor		-	200	
Maximum force transmitted		KN	3,68 ± 6	
Frequency-dynamic force		Hz	8,02	
Noise level		dB	<70	
Coin laundry version		-	Yes	
Double drain		-	Opt.	
Weighing System / Tilting System		-	No	
SLUICE option		-	Yes	
DOOR				
Height center door / Height door		In	27.6/15.8	
Diameter		In	18.1	
POWER				
Motor		Hp	5.4	
Electric heating power		kW	18	
Total electric power (electric model)		kW	19.2	
Total electric power (hw, steam model)		kW	4	
CONNECTIONS		ELECTRIC		STEAM / HOT WATER
Voltage 208-240/60/1~ + G	N° x AWG / A	-		3 x 12 / 20A
Voltage 230/3~ + G	N° x AWG / A	4 x 5 / 60A		4 x 12 / 20A
Voltage 440-480/3 ~ + G	N° x AWG / A	4 x 8 / 40A		-
Steam inlet (Steam model)	inch	3/4"		
Maximum steam consumption (Steam model)	lbs/h	15		
Water inlet	inch	3/4"		
Water main pressure	Kg/cm2	2-4		
Maximum water consumption	Gal/h	43.5*		
Drain	mm/inch	3"		
Drainage capacity	Gal/min	52.8		
DIMENSIONS / PACKING DIMENSIONS				
Net Width / Gross Width		In	34.80/37.2	
Net Depth / Gross Depth		In	42.75/48.5	
Net Height / Gross Height		In	52.76/62.4	
Net weight / Gross weight		Lbs.	888.6/950.4	
Volume		Ft3	65	

* Programmed No. 20, 75% load



	A	B	C	D	E	F	G	H	I	J	K	L	M	N	O	P	Q	R	S	T	U	V	W	X	Y	CGY	CGZ	
FWS-65	mm	884	1075	1340	400	460	149	548	1063	1230	1065	1250	1135	61	74	101	430	510	801	640	268	820	772	1220	570	1210	591	593
	In	34.80	42.75	52.76	15.75	18.11	5.87	21.57	41.85	48.43	41.93	49.21	44.68	2.40	2.91	3.98	16.93	20.08	31.54	25.20	10.55	32.28	30.39	48.03	22.40	47.64	23.27	23.35



WASHING

NORMAL SPIN WASHERS LOW AND MEDIUM CAPACITY FWS-80C TP2

FEATURES

Touch Plus Control

- 7" touchscreen, user friendly and totally programmable.
- Videos on display, ads, instructions.
- Free software for programming, telemetry, data analysis.
- USB Connection.
- 37 Languages.
- 8 dosing signals.

G FACTOR

- G-FACTOR 200.

EFFICIENCY

- Energy Optimization.
- Optimal load.
- Low water consumption.

VERSATILITY

- Custom- Make to order.
- OPL or COIN.
- Electric or Hot water.
- Wet cleaning features.

CONNECTIVITY

- IoT - Fagor-Konnect standard.
- Remote technical service.
- Laundry Management system: OPL and COIN.

ERGONOMICS

- Biggest door diameters: Ø560 (for FWS-80C/100C).
- Easy opening/closing system for door lock.

MAINTENANCE

- Hinged panel: easy access to parts.
- Equivalent parts for all models: contactors, electronic devices, gear.
- Technical menu: traceability, error diagnosis.

OTHERS

- Hard mounted washers.
- Anchoring to floor with anchoring base.
- Panels in skin plate.
- Drum and tub in stainless steel AISI 304
- 3 water inlets.
- CB and WRAS approved product Option ETL.

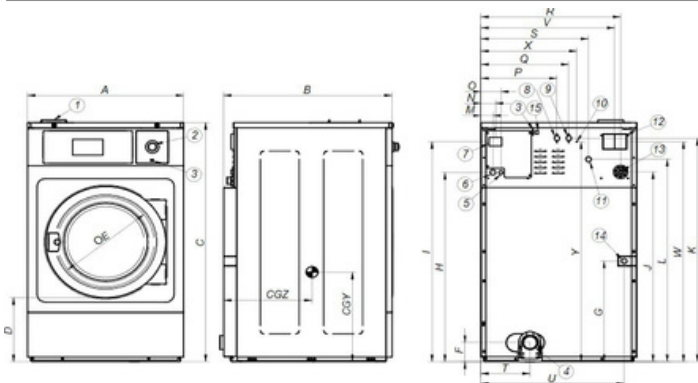
OPTIONS

- Double drain.
- Normally closed valve.
- Silicon gasket (for FWS-80).
- Water FULL FLOW recirculation of bath water.
- Relay card with 6 extra dosing signals: up to 14 signals.
- Printer.
- Reversible door opening.
- Tropicalized coating.
- Steam kit to transform an E or HW heated machine into steam version.
- Stainless steel outer casing.
- Stainless steel front panel.
- SLUICE: model with 0.31 In drum holes (for FWS-80C/100C).
- Anchoring base.
- Coin / token kit.
- Delayed door opening in case of power outage.



DRUM		U.	FWS -80C TP2	
Load capacity	1:9 / 1:10	Lb.	86/77.2	
Volume		CU.FT	12.4	
Diameter		In	33.9	
Depth		In	23.7	
GENERAL DETAILS				
Washing speed / Spinning speed		r.p.m.	45/644	
G Factor		-	200	
Maximum force transmitted		KN	4,59 ±8	
Frequency-dynamic force		Hz	7,58	
Noise level		dB	<70	
Coin laundry version		-	Yes	
Double drain		-	Opt.	
Weighing System / Tilting System		-	No	
SLUICE option		-	Yes	
DOOR				
Height center door / Height door		In	29/17.3	
Diameter		In	22.1	
POWER				
Motor		Hp	5.4	
Electric heating power		kW	21	
Total electric power (electric model)		kW	22	
Total electric power (hw, steam model)		kW	4	
CONNECTIONS		ELECTRIC		STEAM / HOT WATER
Voltage 208-240/60/1~ + G	N° x AWG / A	-		3 x 12 / 20A
Voltage 230/3~ + G	N° x AWG / A	4 x 6 / 70A		4 x 12 / 20A
Voltage 440-480/3 ~ + G	N° x AWG / A	4 x 8 / 45A		-
Steam inlet (Steam model)	inch	3/4"		
Maximum steam consumption (Steam model)	lbs/h	18		
Water inlet	inch	3/4"		
Water main pressure	Kg/cm2	2-4		
Maximum water consumption	Gal/h	52.7*		
Drain	mm/inch	3"		
Drainage capacity	Gal/min	52.8		
DIMENSIONS / PACKING DIMENSIONS				
Net Width / Gross Width		In	38.54/41.2	
Net Depth / Gross Depth		In	45.47/50.4	
Net Height / Gross Height		In	55.55/65.2	
Net weight / Gross weight		Lbs.	1049.6/1124.6	
Volume		Ft3	77.7	

* Programmed No. 20, 75% load



- 01. Soap dispenser
- 02. Emergency stop
- 03. USB port
- 04. Drain
- 05. Electric connection to liquid soap pump
- 06. Electrical connection
- 07. Main switch
- 08. Auxiliary water inlet
- 09. Hot water inlet
- 10. Equipotential connection
- 11. Cold water inlet
- 12. Blur output / Water overload
- 13. Liquid soap connection
- 14. Steam connection
- 15. Ethernet port

	A	B	C	D	E	F	G	H	I	J	K	L	M	N	O	P	Q	R	S	T	U	V	W	X	Y	CGY	CGZ	
FWS-80C	mm	979	1155	1411	370	560	149	623	1139	1307	1116	1322	1211	61	74	101	545	625	885	715	262	917	855	1281	760	1373	635	682
	In	38.54	45.47	55.55	14.57	22.05	5.87	24.53	44.84	51.46	43.94	52.05	47.68	2.40	2.91	3.98	21.45	24.61	34.84	28.15	36.10	32.72	33.66	24.57	29.92	54.06	26.85	26.85



WASHING

NORMAL SPIN WASHERS LOW AND MEDIUM CAPACITY FWS-100C TP2



FEATURES

Touch Plus Control

- 7" touchscreen, user friendly and totally programmable.
- Videos on display, ads, instructions.
- Free software for programming, telemetry, data analysis.
- USB Connection.
- 37 Languages.
- 8 dosing signals.

G FACTOR

- G-FACTOR 200.

EFFICIENCY

- Energy Optimization.
- Optimal load.
- Low water consumption.

VERSATILITY

- Custom- Make to order.
- OPL or COIN.
- Electric or Hot water.
- Wet cleaning features.

CONNECTIVITY

- IoT - Fagor-Konnect standard.
- Remote technical service.
- Laundry Management system: OPL and COIN.

ERGONOMICS

- Biggest door diameter: Ø560 (for FWS-80C/100C).
- Easy opening/closing system for door lock.

MAINTENANCE

- Hinged panel: easy access to parts.
- Equivalent parts for all models: contactors, electronic devices, gear.
- Technical menu: traceability, error diagnosis.

OTHERS

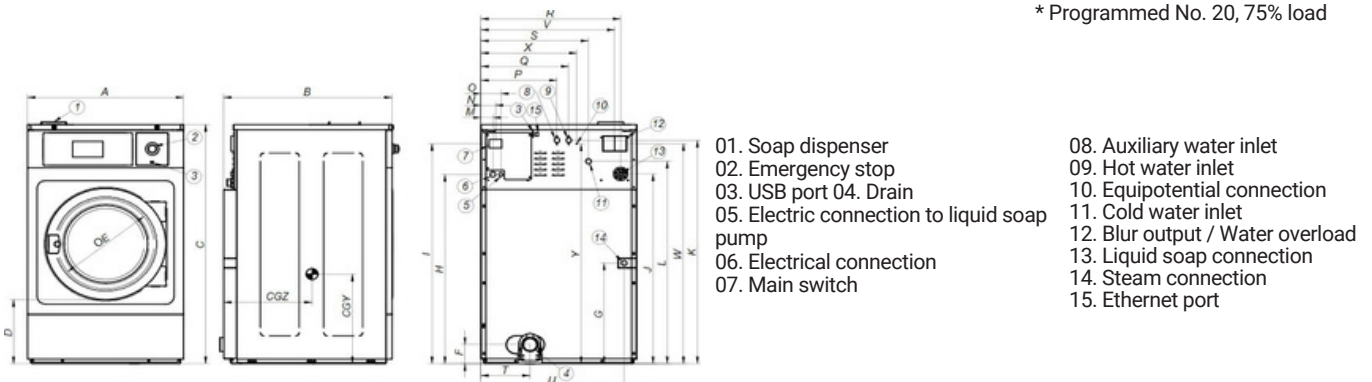
- Hard mounted washers.
- Anchoring to floor with anchoring base.
- Panels in skin plate.
- Drum and tub in stainless steel AISI 304
- 3 water inlets.
- CB and WRAS approved product Option ETL.

OPTIONS

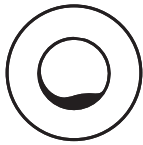
- Double drain.
- Normally closed valve.
- Silicon gasket (for FWS-80).
- Water FULL FLOW recirculation of bath water.
- Relay card with 6 extra dosing signals: up to 14 signals.
- Printer.
- Reversible door opening.
- Tropicalized model: protected board.
- Steam kit to transform an E or HW heated machine into steam version.
- Stainless steel outer casing.
- Stainless steel front panel.
- SLUICE: model with 0.31 In drum holes (for FWS-80C/100C).
- Anchoring base.
- Coin / token kit.
- Delayed door opening in case of power outage.

DRUM		U.	FWS - 100C TP2	
Load capacity	1:9 / 1:10	Lb.	103.6/92.6	
Volume		CU.FT	15.9	
Diameter		In	33.9	
Depth		In	28.4	
GENERAL DETAILS				
Washing speed / Spinning speed		r.p.m.	45/644	
G Factor		-	200	
Maximum force transmitted		KN	5.9 ±8	
Frequency-dynamic force		Hz	7.58	
Noise level		dB	<70	
Coin laundry version		-	Yes	
Double drain		-	Opt.	
Weighing System / Tilting System		-	No	
SLUICE option		-	Yes	
DOOR				
Height center door / Height door		In	29/17.3	
Diameter		In	22.1	
POWER				
Motor		Hp	8	
Electric heating power		kW	21	
Total electric power (electric model)		kW	22	
Total electric power (hw, steam model)		kW	6	
CONNECTIONS		ELECTRIC		STEAM / HOT WATER
Voltage 208-240/60/1~ + G	N° x AWG / A	-		-
Voltage 230/3~ + G	N° x AWG / A	4 x 6 / 70A		4 x 10 / 30A
Voltage 440-480/3 ~ + G	N° x AWG / A	4 x 8 / 45A		4 x 15 / 15A
Steam inlet (Steam model)	inch	3/4"		
Maximum steam consumption (Steam model)	lbs/h	21		
Water inlet	inch	3/4"		
Water main pressure	Kg/cm2	2-4		
Maximum water consumption	Gal/h	67.7*		
Drain	mm/inch	3"		
Drainage capacity	Gal/min	52.8		
DIMENSIONS / PACKING DIMENSIONS				
Net Width / Gross Width		In	38.54/44.3	
Net Depth / Gross Depth		In	52.17/56.7	
Net Height / Gross Height		In	55.55/64.6	
Net weight / Gross weight		Lbs.	1323/1477.4	
Volume		Ft3	91.8	

* Programmed No. 20, 75% load



	A	B	C	D	E	F	G	H	I	J	K	L	M	N	O	P	Q	R	S	T	U	V	W	X	Y	CGY	CGZ	
FWS - 100C	mm	979	1325	1411	370	560	154	623	1139	1307	1116	1322	1211	61	74	101	545	625	885	715	262	917	855	1281	760	1373	635	760
	In	38.54	52.17	55.55	14.57	22.05	6.06	24.53	44.84	51.46	43.94	52.05	47.68	2.40	2.91	3.98	21.46	24.61	34.85	28.15	10.31	36.10	33.66	50.43	29.92	54.06	25.00	29.92



WASHING

NORMAL SPIN WASHER EXTRACTORS HIGH CAPACITY FWS-135C TP2



FEATURES

Touch Plus Control

- 7" touchscreen, user friendly and totally programmable.
- Videos on display, ads, instructions.
- Free software for programming, telemetry, data analysis.
- USB Connection.
- 37 Languages.
- 8 dosing signals.

G FACTOR

- High G-Factor 150.

EFFICIENCY

- Energy Optimization.
- Optimal load.
- Low water consumption.

VERSATILITY

- Custom- Make to order.
- OPL or COIN.
- Electric or Hot water.
- Wet cleaning features.

CONNECTIVITY

- IoT - Fagor-Konnect standard.
- Remote technical service.
- Laundry Management system: OPL and COIN.

ERGONOMICS

- Big door diameter: Ø 560 mm.
- Easy opening/closing system for door lock.

MAINTENANCE

- Hinged panel: easy and ergonomic access.
- Equivalent parts for all models: contactors, electronic devices,...
- Technical menu: telemetry, error diagnosis.

OTHERS

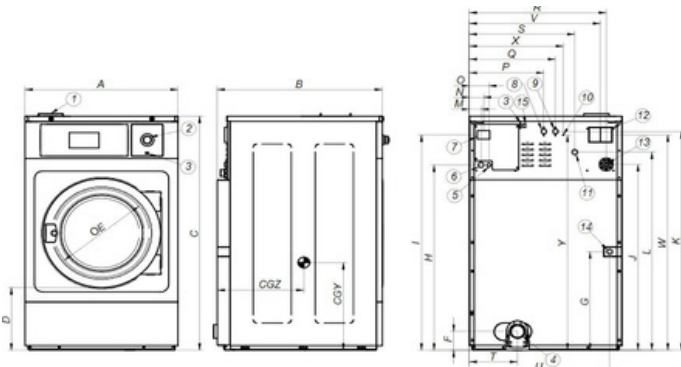
- Hard mounted washers.
- Anchoring to floor with anchoring base.
- Panels in skin plate.
- Drum and tub in stainless steel AISI 304.
- 3 water inlets (Water inlet hoses not included).
- CB and WRAS approved product Option ETL.

OPTIONS

- DQ-2 Dosing pump kit.
- Extra dosing pump DB-1.
- SLUICE: model with 8mm drum holes.
- Anchoring base.
- Double drain.
- Water inlet hose.
- Relay card with 6 extra dosing signals: up to 14 signals.
- Reversible door opening.
- Tropicalized coating.
- Steam kit to transform an E or HW heated machine into steam version.
- Stainless steel AISI 304 outer casing.
- Stainless steel AISI 304 front panel.
- Coin / token kit.
- Auto unlock kit for the door.
- Stainless steel AISI 304 outer casing.
- Front soap dispenser.

DRUM		U.	FWS - 135C TP2	
Load capacity 1:9 / 1:10		Lb.	143.3 / 130.1	
Volume		CU.FT	21.2	
Diameter		In	41.3	
Depth		In	26.9	
GENERAL DETAILS				
Washing speed / Spinning speed		r.p.m.	42,5 / 505	
G Factor		-	150	
Maximum force transmitted		KN	9.12 ±15	
Frequency-dynamic force		Hz	6.93	
Noise level		dB	< 70	
Coin laundry version		-	YES	
Double drain		-	OPT.	
Weighing System / Tilting System		-	NO	
SLUICE option		-	YES	
DOOR				
Height center door / Height door		In	35.5 / 21.3	
Diameter		In	22.1	
POWER				
Motor		Hp	7.4	
Electric heating power		kW	36	
Total electric power (electric model)		kW	38	
Total electric power (hw, steam model)		kW	5.5	
CONNECTIONS		ELECTRIC		STEAM / HOT WATER
Voltage 208-240/60/1~ + G	Nº x AWG / A	-		-
Voltage 230/3~ + G	Nº x AWG / A	4x 2 / 125A		4x 8 / 50A
Voltage 440-480/3 ~ + G	Nº x AWG / A	4x 6 / 70A		4x 10/30A
Steam inlet (Steam model)	inch	3/4"		
Maximum steam consumption (Steam model)	lbs/h	21		
Water inlet	inch	1"		
Water main pressure	Kg/cm2	2-4		
Maximum water consumption	Gal/h	165.8**		
Drain	mm/inch	3"		
Drainage capacity	Gal/min	200		
DIMENSIONS / PACKING DIMENSIONS				
Net Width / Gross Width		In	48.23 / 52.6	
Net Depth / Gross Depth		In	57.77/ 56.7	
Net Height / Gross Height		In	64.57 / 73.3	
Net weight / Gross weight		Lbs.	1746.4 / 1936	
Volume		Ft3	21.1	

* Programmed No. 2, 100% load



- 01. Soap dispenser
- 02. Emergency stop
- 03. USB port
- 04. Drain
- 05. Electric connection to liquid soap pump
- 06. Electrical connection
- 07. Main switch
- 08. Auxiliary water inlet
- 09. Hot water inlet
- 10. Equipotential connection
- 11. Cold water inlet
- 12. Blur output / Water overload
- 13. Liquid soap connection
- 14. Steam connection
- 15. Ethernet port

	A	B	C	D	E	F	G	H	I	J	K	L	M	N	O	P	Q	R	S	T	U	V	W	X	Y	CGY	CGZ	
FWS-135C	mm	1225	1315	1640	540	560	115	984	1368	1536	1306	1551	1318	61	74	101	651	731	1110	869	318	1163	1080	1470	992	1595	644	972
	In	48.23	51.77	64.57	21.26	22.05	4.53	38.74	53.86	60.47	51.42	61.65	1.89	2.40	2.91	3.98	25.63	28.78	43.70	34.21	12.52	45.79	42.52	57.87	39.06	62.80	25.35	38.27



WASHING

NORMAL SPIN WASHER EXTRACTORS HIGH CAPACITY FWS-180C TP2



FEATURES

Touch Plus Control

- 7" touchscreen, user friendly and totally programmable.
- Videos on display, ads, instructions.
- Free software for programming, telemetry, data analysis.
- USB Connection.
- 37 Languages.
- 8 dosing signals.

G FACTOR

- High G-Factor 150.

EFFICIENCY

- Energy Optimization.
- Optimal load.
- Low water consumption.

VERSATILITY

- Custom- Make to order.
- OPL or COIN.
- Electric or Hot water.
- Wet cleaning features.

CONNECTIVITY

- IoT - Fagor-Konnect standard.
- Remote technical service.
- Laundry Management system: OPL and COIN.

ERGONOMICS

- Big door diameter: Ø 560.
- Easy opening/closing system for door lock.

MAINTENANCE

- Hinged panel: easy and ergonomic access.
- Equivalent parts for all models: contactors, electronic devices,...
- Technical menu: telemetry, error diagnosis.

OTHERS

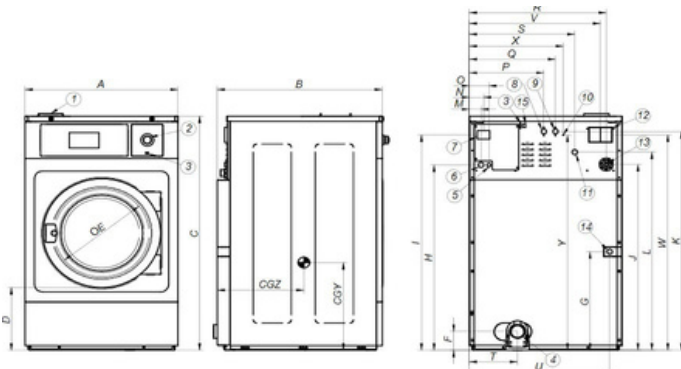
- Hard mounted washers.
- Anchoring to floor with anchoring base.
- Panels in skin plate.
- Drum and tub in stainless steel AISI 304.
- 3 water inlets (Water inlet hoses not included).
- CB and WRAS approved product Option ETL.

OPTIONS

- DQ-2 Dosing pump kit.
- Extra dosing pump DB-1.
- SLUICE: model with 0.31 In drum holes.
- Anchoring base.
- Double drain.
- Water inlet hose.
- Relay card with 6 extra dosing signals: up to 14 signals.
- Reversible door opening.
- Tropicalized coating.
- Steam kit to transform an E or HW heated machine into steam version.
- Stainless steel AISI 304 outer casing.
- Stainless steel AISI 304 front panel.
- Coin / token kit.
- Auto unlock kit for the door.
- Stainless steel AISI 304 outer casing.
- Front soap dispenser.

DRUM		U.	FWS - 180C TP2
Load capacity 1:9 / 1:10		Lb.	187.4/169.8
Volume		CU.FT	28.2
Diameter		In	41.3
Depth		In	36.9
GENERAL DETAILS			
Washing speed / Spinning speed		r.p.m.	42.5 / 505
G Factor		-	150
Maximum force transmitted		KN	10.17 ±15
Frequency-dynamic force		Hz	6.93
Noise level		dB	< 70
Coin laundry version		-	YES
Double drain		-	OPT.
Weighing System / Tilting System		-	NO
SLUICE option		-	YES
DOOR			
Height center door / Height door		In	35.5 / 21.3
Diameter		In	22.1
POWER			
Motor		Hp	7.4
Electric heating power		kW	48/36***
Total electric power (electric model)		kW	50.5/38.5***
Total electric power (hw, steam model)		kW	7.5
CONNECTIONS		ELECTRIC	STEAM / HOT WATER
Voltage 208-240/60/1~ + G	N° x AWG / A	-	-
Voltage 230/3~ + G	N° x AWG / A	4x 2 / 125A	4x 8 / 50A
Voltage 440-480/3 ~ + G	N° x AWG / A	4x 6 / 70A	4x 10/30A
Steam inlet (Steam model)	inch		3/4"
Maximum steam consumption (Steam model)	lbs/h		21
Water inlet	inch		1"
Water main pressure	Kg/cm2		2-4
Maximum water consumption	Gal/h		215**
Drain	mm/inch		3"
Drainage capacity	Gal/min		52.8
DIMENSIONS / PACKING DIMENSIONS			
Net Width / Gross Width		In	48.23 / 52.6
Net Depth / Gross Depth		In	58.85/ 65.4
Net Height / Gross Height		In	64.57 / 73.3
Net weight / Gross weight		Lbs.	1920.6 / 2123.4
Volume		Ft3	145.5

* Programmed No. 2, 100% load



- 01. Soap dispenser
- 02. Emergency stop
- 03. USB port
- 04. Drain
- 05. Electric connection to liquid soap pump
- 06. Electrical connection
- 07. Main switch
- 08. Auxiliary water inlet
- 09. Hot water inlet
- 10. Equipotential connection
- 11. Cold water inlet
- 12. Blur output / Water overload
- 13. Liquid soap connection
- 14. Steam connection
- 15. Ethernet port

	A	B	C	D	E	F	G	H	I	J	K	L	M	N	O	P	Q	R	S	T	U	V	W	X	Y	CGY	CGZ	
FWS-180C	mm	1225	1492	1640	540	560	115	984	1368	1536	1306	1551	1318	61	74	101	651	731	1110	869	318	1163	1080	1470	992	1595	644	750
	In	48.23	58.74	64.57	21.26	22.05	4.53	38.74	53.86	60.47	51.42	61.06	51.89	2.40	2.91	3.98	25.63	28.78	43.70	34.21	12.52	45.79	42.52	57.87	39.06	62.80	25.35	29.53