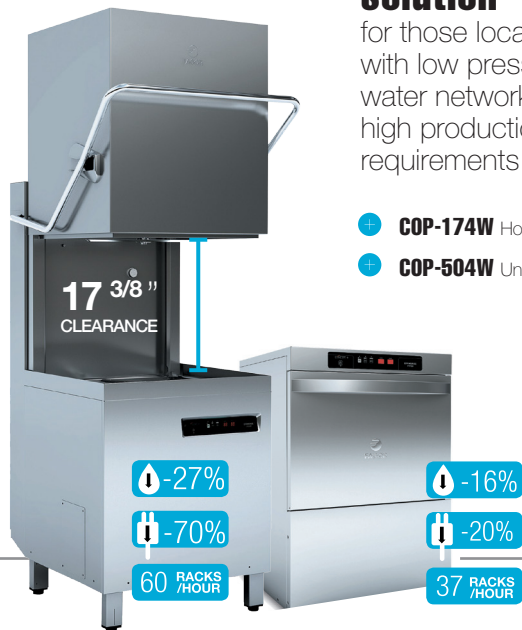


One body, two ranges

**INNOVATIVE
IDEAS**

Smarter & Simpler to operate: REVOLUTIONARY

CONCEPT +



The perfect solution

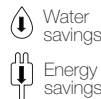
for those locations with low pressure water network and high production requirements

- + **COP-174W** Hood-type
- + **COP-504W** Undercounter

CONCEPT

For those who believe that **technology & simplicity** can go hand in hand.

- + **CO-502W** Undercounter
- + **CO-402W** Glasswasher



01. OPTIMUM SANITATION

EFFI-RINSE system assures a perfect result with a linear 180°F full rinsing cycle thanks to its incorporated rinsing pump and air brake system design, which works with any incoming water pressure.



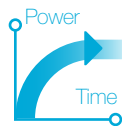
02. SEAMLESS / STAMPED CONSTRUCTION

Full stainless steel body built to resist the strongest usage of the market. The new stamped design on the door, wash tank, rack guides and control panel increases machine's lifetime and eases the cleaning process.



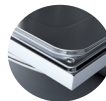
03. MULTI-CONNECTION BOX

No need to remove covers or panels anymore to install or check the network connectivity, reducing risks during the electrical installation. Three set power control on the COP-504, adapting to every consumption/production need.



04. SOFT-START

A wash-pump power control during the first stage ensures a low noise level on the installation and prevents the glasses and ware from moving inside the rack protecting them from breaking and improving the employee's safety.



05. DOUBLE SKIN BODY & DOOR

Full double skin body and door with stamped finishing, keeping the heat inside of the machine for efficiency and energy savings and providing noise isolation for a peaceful kitchen atmosphere.



06. IPX4

Stronger protection against water hose cleaning and external humidity on the control panel, ensuring a prolonged life of the electronic components and the machine.